

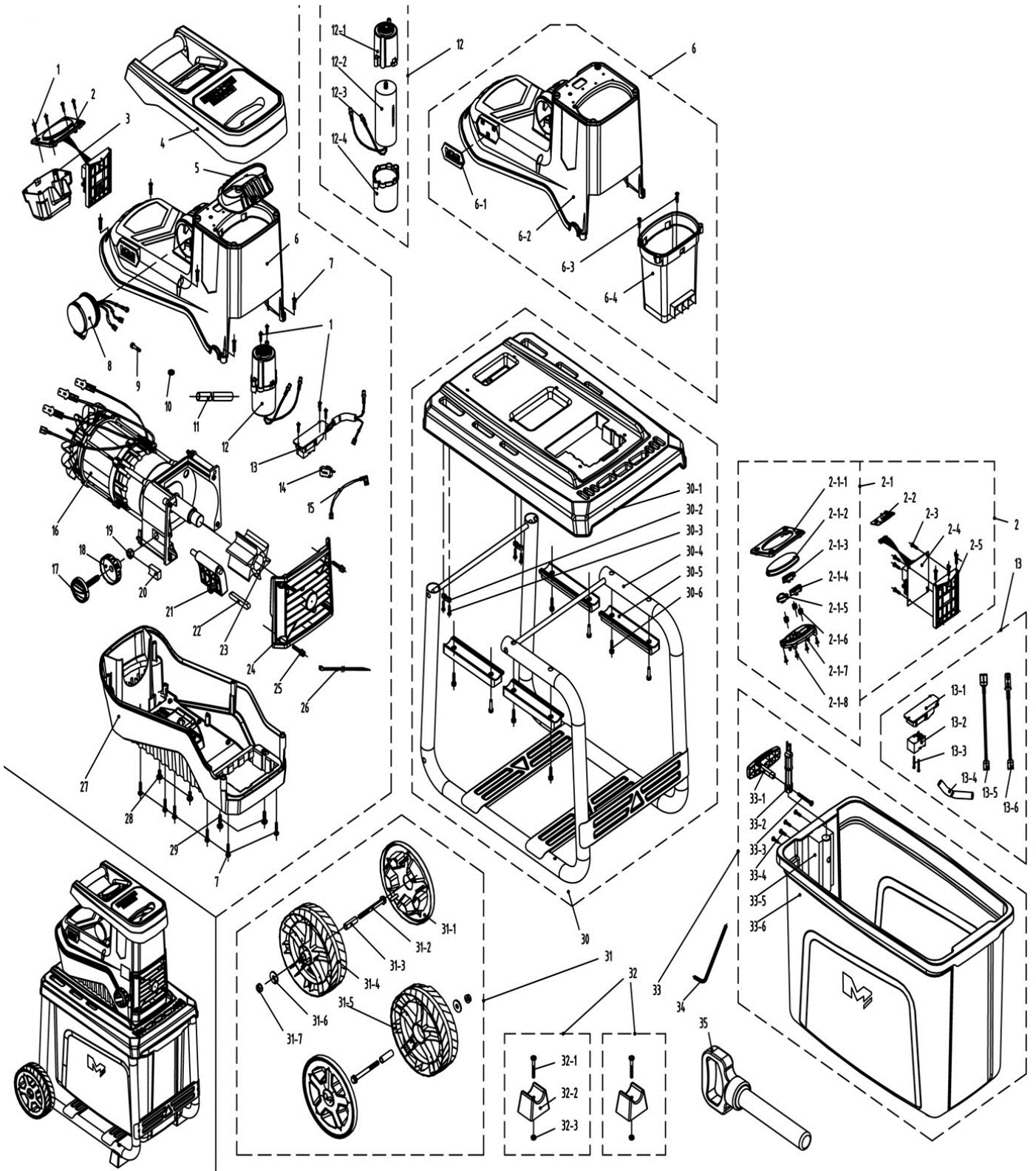
Model Number

Mac Allister MSHP2800D-2



2800W Corded Shredder (UK)

Exploded Diagram



Parts List

Part ID	Apelson PN	MPN	Part Description	Qty
1	GP0000005553	8SNAB40-14Q	FLANGE SCREW	9
2	GP0000005554	8440-546111-0060620	ELECTRICAL CONTROL COMPONENTS	1
2-1	GP0000005555	8440-546110-0000121	THE BUTTON ASSEMBLY	1
2-1-1	GP0000005556	8181-546102-0000120	SWITCH PANEL	1
2-1-2	GP0000005557	8185-546101-0000020	WATERPROOF BOARD	1
2-1-3	GP0000005558	8312-546103-0016620	STOP BUTTON	1
2-1-4	GP0000005559	8312-546102-0060620	THE START BUTTON	1
2-1-5	GP0000005560	8312-546104-0060620	THE REVERSE BUTTON	1
2-1-6	GP0000005561	8342-546101-0000000	BUTTON SPRING	3
2-1-7	GP0000005562	8187-546101-0000120	BUTTON FIXING PLATE	1
2-1-8	GP0000005563	8SNAB30-08B	THE FLANGE SCREWS	4
2-2	GP0000005564	8414-546101-0000010	OPERATION CIRCUIT BOARD	1
2-3	GP0000002764	8SNAB40-16D	THE FLANGE SCREWS	7
2-4	GP0000005565	8414-546301-0100010	THE CONTROL CIRCUIT BOARD	1
2-5	GP0000005566	8187-546102-0000120	PCB FIXED PLATE	1
3	GP0000005567	8020-546302-0001220	SWITCH BOX UNDER THE COVER	1
4	GP0000002782	8001-546101-0268821	UPPER BODY COMPONENT/HANDLE	1
5	GP0000002783	8105-546101-0100120	HOPPER THROAT	1
6	GP0000005568	8440-546124-0001220	MAIN BODY ASSEMBLY (UPPER)	1
6-1	GP0000002781	8181-546195-0068820	LABEL	1
6-2	GP0000005569	8006-546112-0101220	MAIN BODY	1
6-3	GP0000002764	8SNAB40-16D	BODY SCREW	2
6-4	GP0000002784	8105-546104-0000120	HOPPER CHANNEL	1
7	GP0000005570	8SNAB50-25Q	FLANGE SCREW	16
8	GP0000005571	8440-546154-0000010	THREE CORE BUILT-IN WOODEN PLUG	1
9	GP0000005572	8SJAN05-16D	SCREW	1
10	GP0000002846	8WI-05D	LOCKING WASHER	1
11	GP0000002056	233-1006	HEAT-SHRINK TUBING	1
12	GP0000005573	8440-546118-0000010	CAPACITOR	1
12-1	GP0000005574	8024-546101-0000120	CAPACITOR COVER	1
12-2	GP0000005575	8416-512209-0100010	CAPACITANCE	1
12-3	GP0000005576	239-0006	MALE TERMINAL	1
12-4	GP0000005577	8024-546102-0000120	CAPACITOR COVER	1
13	GP0000005578	8440-546126-0000010	SWITCH ASSEMBLY	1
13-1	GP0000002797	8141-546101-0000120	SWITCH HOLDER	1
13-2	GP0000002798	8042-546104-0000010	STRONG OFF SWITCH	1
13-3	GP0000002799	8SJAB30-25D	SELF TAPPING SCREW	2
13-4	GP0000002800	240-2002	YELLOW WAX TUBES	1
13-5	GP0000005579	8413-546109-0000010	CONNECTING WIRE	1
13-6	GP0000005580	8413-546110-0000010	CONNECTING WIRE	1
14	GP0000005581	8042-620202-0000010	MICROSWITCH	2
15	GP0000005582	8413-432801-0000020	CONNECTING WIRE	1
16	GP0000005583	8440-546112-0000021	MOTOR + GEARBOX	1
17	GP0000002838	8313-546102-0060620	ADJUSTING KNOB	1
18	GP0000002839	8313-546103-0060620	LOCKING KNOB	1
19	GP0000004718	8NA-10B	NUT	1

20	GP0000004719	8301-546301-0000120	NUT HOLDER	1
21	GP0000005584	8181-546301-0100000	INLET BAFFLE	1
22	GP0000002837	8DJA-00003	A TYPE FLAT KEY	1
23	GP0000005585	8231-546301-0100000	BLADE	1
24	GP0000002847	8440-546104-0000010	FRONT GRILLE COVER PLATE	1
25	GP0000005586	8SACN06-30D01	FRONT GRILLE COVER PLATE SCREWS	2
26	GP0000002580	236-1006	NYLON CABLE TIE	6
27	GP0000005587	8006-546105-0001220	MAIN BODY ASSEMBLY (LOWER)	1
28	GP0000005588	8SJAN06-16D	SCREW MACHINE THREE COMBINATION	2
29	GP0000002804	8SJAN06-25D	SCREW MACHINE THREE COMBINATION	2
30	GP0000005589	8440-546128-0001220	LOWER METAL FRAME ASSEMBLY	1
30-1	GP0000005590	8144-546102-0001220	LOWER METAL FRAME TOP SECTION	1
30-2	GP0000002796	8184-516201-0001720	CABLE CLAMP	2
30-3	GP0000002764	8SNAB40-16D	FLANGE SCREW	4
30-4	GP0000005591	8292-546102-0000000	SUPPORT BASE	1
30-5	GP0000005592	8186-546102-0101220	STENTS PRESSURE PLATE	4
30-6	GP0000002779	8SNAB50-25D	FLANGE SCREW	4
31	GP0000002867	8440-546129-0068820	WHEEL ASSEMBLY	1
31-1	GP0000002868	8020-546192-0068820	WHEEL TRIM	2
31-2	GP0000002869	8SQDD08-80D	LONG-SHOULDER WHEEL BOLT	2
31-3	GP0000002870	8331-546101-0100000	SPINDLE BEARING	2
31-4	GP0000002871	8121-546103-0100120	LEFT-TREAD WHEEL	1
31-5	GP0000002872	8202-940304-0000002	RIGHT-TREAD WHEEL	2
31-6	GP0000002873	8NE-08D01	SIX CORNER FLANGE LOCK NUT	2
31-7	GP0000002874	8121-546104-0100120	LOCKING NUT	1
32	GP0000002863	8440-546107-0000120	RUBBER FEET	2
32-1	GP0000002553	8SJAD06-45D	PAN HEAD SCREW	1
32-2	GP0000002865	8143-546101-0000120	STRONG POINT	1
32-3	GP0000002570	8NH-06D	NUT	1
33	GP0000002856	8440-546130-0060620	COLLECTOR ASSEMBLY	1
33-1	GP0000002857	8312-546101-0060620	RELEASE CATCH	1
33-2	GP0000002858	8043-546101-0001220	CATCH PUSH-ROD	1
33-3	GP0000002089	8SJAB50-35D	SELF TAPPING SCREW	1
33-4	GP0000002764	8SNAB40-16D	FLANGE SCREW	4
33-5	GP0000002861	8141-546301-0001220	CATCH HOUSING	1
33-6	GP0000002862	8104-546191-0000020	BIN	1
34	GP0000002877	8261-543101-0100000	ACCESSORY - HEX KEY	1
35	GP0000002878	8087-543102-0000120	ACCESSORY - HOPPER FEEDING TOOL	1